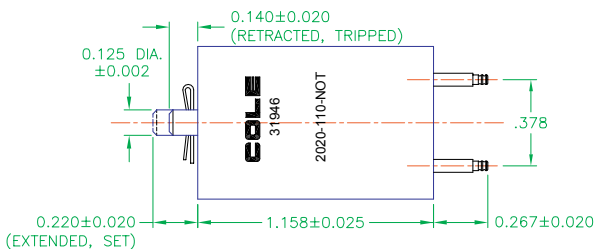
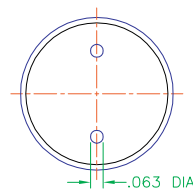


Front View

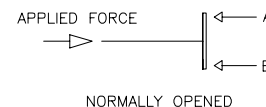
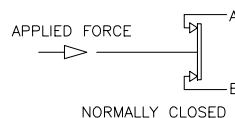
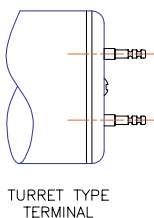
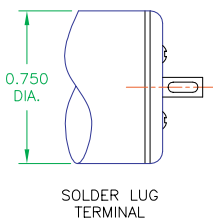


Side View



Rear View

Typical Features



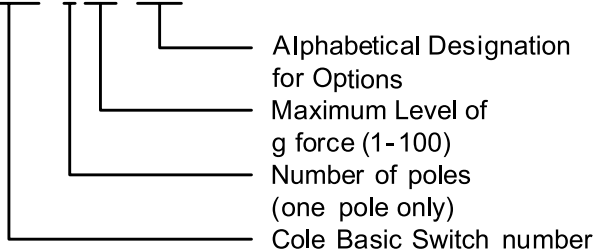
NOTES:

1. Dimensions are in inches.
2. Unless otherwise specified, tolerances are ± 0.005 and $\pm 3^\circ$ on angles (non-accumulative)
3. Switch latches close on impact.

ORDERING INFORMATION

Sample Code

2020 - 1 05 - ****



OPTIONS

The following options can be added to the standard switch. When ordering, simply add the letters after the basic part number.
 M = with Mounting plate.
 NO = Normally Opened structure.
 NC = Normally Closed structure.
 T = with Turret Type Terminals
 S = with Solder Lug Terminals.



Series 2020 Technical Data

Specification	Unit	Value	Note:
Continuous (Non-Switching) Current Carrying Capacity	Amps	6	
Switching Current Capacity at 28 VDC resistive	Amps	0.250	at Atmospheric pressure with 85°C and at reduced Barometric pressure with 25°C
Switching Current Capacity at 115 VAC resistive	Amps	0.150	
Switching Current Capacity at 28 VDC inductive (2.8 H.)	Amps	0.030	
Dielectric Strength, min.	VAC	3,000	
Contact resistance	milliohms (mΩ)	50	
Insulation resistance	megaohms (MΩ)	Infinity	
Contact Surfaces		Gold plated	.00003 gold over pure silver
G-Force	G	1 to 100	
Altitude	feet	70,000	typical pressure at 70,000 feet: 0.64 psi
Temperature, min.	degrees Celsius	-65	
Temperature, max.	degrees Celsius	85	

